



New Tech New Life



Smart & Good Image

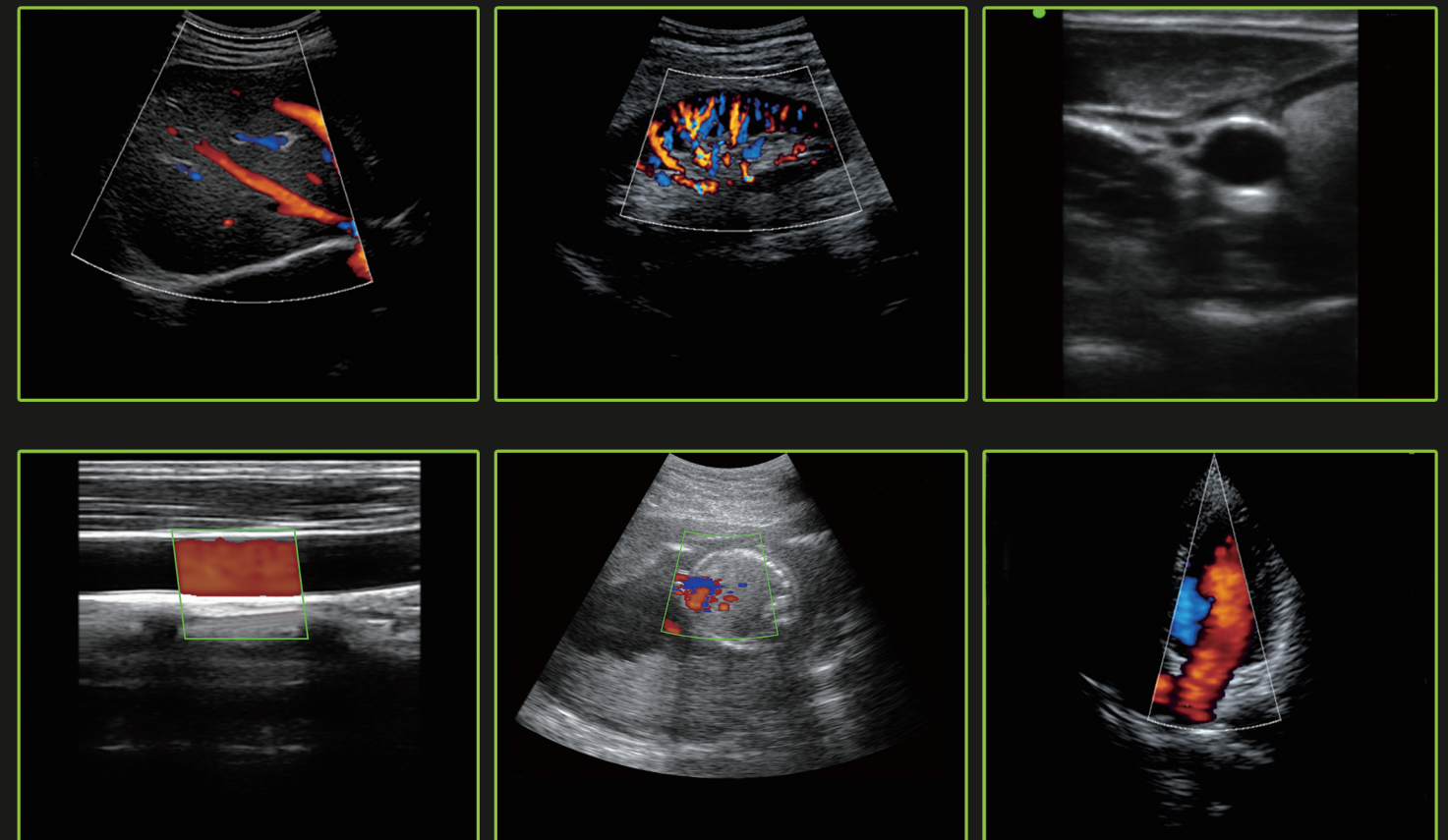


Sonostar Technologies Co., Limited

Add: C Building, #27 Yayingshi Road, Science Town, Guangzhou, China
Tel: +86-20-32382095 Web: www.sonostarmed.com E-mail: sonostar@sonostar.net

C5
Wireless Laptop Color Doppler

- Superlow price, high cost-effective
- Probe wireless connect, freely operation
- B, B/M, B+Color, B+PDI, B+PW multiple imaging modes
- Windows system based, easy to extend function include remote diagnosis
- Supporting various USB ink/laser printers



Standard Configuration:

- Host 1 unit
- Double head probe 1 pcs (if change to single head probe also OK and lower price)
- Accessories and Packing(can select bag or draw bar box)

Optional:

More probe, Puncture kit, Trolley, Printer, Wireless charger for probe

Specification:

- Screen: 15inch LCD
- Channel of ultrasound circuit board: 32/64(different model probe)
- Probe Connect: Wireless connect, freely operation
- Probe Type: Convex, Microconvex, Linear, Small Linear, Transvaginal, Phased array(coming soon), single head or double(the heads can select two in above type)
- Probe element: 128/192(different model probe)
- Probe frequency and scan depth, angle/width:
Convex head 3.5MHz/5MHz, 90/160/220/305mm, 60°
Linear head 7.5MHz/10MHz, 20/40/60/100mm, 40mm
Small Linear head 10MHz/14MHz, 20/30/40/55mm, 25mm
Microconvex head 3.5MHz/5MHz, 90/130/160/200mm, 88°
Transvaginal head 6.5MHz/8MHz, 40/60/80/100mm, 149°
- Image Adjust: BGain, TGC, DYN, Focus, Depth, Harmonic, Denoise, Color Gain, Steer, PRF
- Cineplay: auto and manual, frames can set as 100/200/500/1000
- Puncture assist function: the function of in-plane puncture guide line, out-of-plane puncture guide line, automatic blood vessel measurement.
- Measure: Length, Area, Angle, heart rate, Obstetrics
- Image save: jpg, avi and DICOM format, store volume 120G
- Image and report print: can work with most model ink/laser printer
- Remote diagnosis: can install any remote diagnosis software and work
- Battery working time: Probe built-in battery work 2~5 hours(according to different probe and whether continue scan), Host built-in battery work 2 hours
- Probe battery charge: by USB charge or wireless charge, take 2 hours
- Image mode: B, B/M, B+Color, B+PDI, B+PW
- Dimension: L362 × W340 × H50mm
- Operation system: Windows
- Image frame rate: 18 frames/second
- Weight: 4Kg