

C5T EC2023/A0



*New Tech, New Life*



**C5T**

Trolley Color Doppler  
Ultrasound

*Delicate image*  
*High cost-effectiveness*



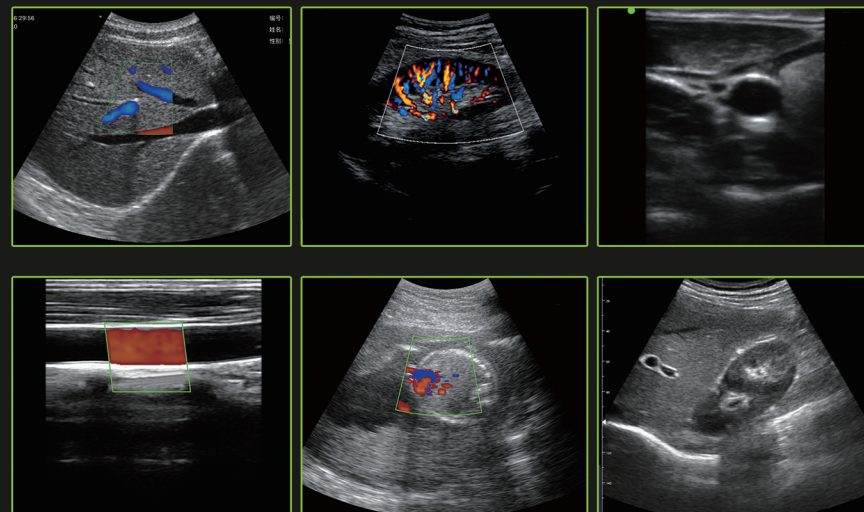
**Sonostar Technologies Co., Limited**

Add: C Building, #27 Yayingshi Road, Science Town, Guangzhou, China

Tel: +86-20-32382095 Fax: +86-20-62614030 Web: [www.sonostarmed.com](http://www.sonostarmed.com)



[www.sonostarmed.com](http://www.sonostarmed.com)



### Standard Configuration:

Ultrasound device x 1 unit, Convex probe x 1pc

### Optional probes and accessories:

Linear, Phase Array, Micro-Convex, Transvaginal, Transrectal, puncture guide, Tablet, Trolley, external battery, Teleconsultation system

### Specification:

- Screen: 20inch LCD
- Image mode: B, B/M, Color, PW, PDI
- Channel of Ultrasound: 64
- Gain : 30db-105db
- Denoise:0-1-2-3-4
- Dynamic Range: 40-50-60-70-80-90-100-110
- Probe type: Convex, Linear, Phase Array, Micro-Convex, Transvaginal, Transrectal
- Probe Connection Port: 2
- Frequency, Scanning Depth, Angle/Width:
  - Convex: 3.5MHz/5MHz, 90/160/220/305mm, 60°
  - Linear: 7.5MHz/10MHz, 20/40/60/100mm, 40mm
  - High Frequency Linear: 10MHz/14MHz, 20/30/40/55mm, 25mm
  - Phase Array: 2.2MHz/3.6MHz, 40-100mm, 80°
  - Micro-Convex: 3.5MHz/5MHz, 90/130/160/200mm, 88°
  - Transvaginal: 6.5MHz/8MHz, 40/60/80/100mm, 149°
  - Biplane Transrectal: Convex 6.5MHz/8MHz, 40/60/80/100mm, 149°; Linear 7.5MHz/10MHz, 20/40/60/100mm, 40mm
- Image Adjust: BGain, TGC, DYN, Focus, Depth, Harmonic, Denoise, Color Gain, Steer, PRF

- Cineplay: auto and manual, frames can set as 100/200/500/1000
- Puncture Auxiliary Function: In-Plane puncture guide line, Out-Plane puncture guide line, automatic blood vessel measurement.
- Measure: Length, Area, Angle, Heart Rate, Obstetrics
- Image Frame Rate: 18f/s
- Operating System : Windows
- Image Saved: jpg, avi and DICOM format, storage volume 120G
- Image and Report Printing: compatible with most printers
- Weight: 4Kg – Image and report print: can work with most model ink/laser printer
- Remote transmission: The device can be wired/wireless Internet access, images and information can be transmitted through the software's built-in DICOM and WorkList transmission function or other software
- Remote Diagnosis: can install any remote diagnosis software and work
- Battery Duration Time: built-in battery, 2 hours
- Trolley size: lifting height 770~1070mm, Keyboard countertop 440 \* 265mm, Printer countertop 480 \* 480mm
- Packaging size: 690 \* 555 \* 235mm
- Net Weight: 20KGS, gross weight : 25KGS in total