

# IGG

ایده گستر قدرت



## Wireless Probe Type Ultrasound Scanner Series for Animal Pregnancy



VProbe-C Rectal Convex for Cow/Horse big embryo



VProbe-L Rectal Linear for Cow/Horse small embryo



VProbe-N for big sheep



UProbe-1 for pig and sheep



UProbe-C3 for pig and sheep

### Application in animal husbandry:

- To monitor follicular development and ovulation, provide a reliable scientific basis for when to breed and increase the breeding rate.
- Ultrasound monitoring in early pregnancy, to find nonpregnant timely.
- Pregnancy monitoring can detect stillbirth, miscarriage, embryo absorption, etc. Meanwhile it can estimate the number of embryo.
- Perinatal monitoring can determine fetal viability and whether fetal or afterbirth is exhausted.
- Postnatal monitoring of uterine recovery, diagnosis of endometritis, uterine accumulation, effusion and other reproductive disorders.

*Timely Judge,  
Reduce Nonpregnant*

شرکت ایده گستر قدرت نماینده تخصصی فروش و خدمات پس از فروش سیستم‌های سونوگرافی در ایران

WWW.IGG-MED.COM

## Configuration

Standard Configuration: Wireless type host x 1, USB charging cable x 1

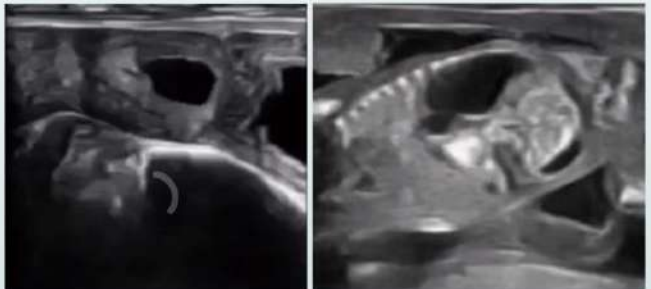
Optional: Android tablet/phone, carry case

ایده گستر قدرت



## Specifications

- Scan mode: Sector, Phase Array
  - Frequency: Sector/Convex 3.5/5.0MHz, Linear 7.5/10MHz
  - Scan depth: Convex 90/160/220/305mm, Linear 20/40/60/100mm
  - Transducer Radius/Width: Convex R60, Linear L64
  - Display mode: B, B/M
  - Image adjustable: Gain, Focus, Reverse Phase Pulse Harmonic, noise reduction
  - Battery working time: 3~8 hours
  - Charging mode: USB charging
  - Measurements: Distance, area, circumference, heart rate, obstetrics.
- Cineloop: Manual and automatic cineloop , you can set the number of playback frames as 100/200/500/1000
- Image save: JPG, AVI, DICOM multiple formats
  - Connection mode : between probe and host, WIFI wireless connection
  - Wifi type : 802.11n/2.4G/5G dual-band 450Mbps
  - Image frame rate: 20f/s
  - Weight: convex: 250g, sector: 200g
  - Working system: Apple and Android
  - Size: Long Rectal Convex /Linear Probe length: 80cm
  - Weight: Long Rectal 600g , small Rectal /Convex 205g, 150g Sector



Nonpregnant image



Pregnancy image in 42 days (twins)



Pregnancy image in 90 days (twins)



Full of urine bladder image

## Sonostar Technologies Co., Limited

Address: C Building, #27 Yayingshi Road, Science Town, Guangzhou, China  
Parts Factory: #31 Dashuiwan Road, Xiangzhou, Zhuhai, Guangzhou, China

Tel: +86-20-32382095

Fax: +86-20-62614030

Web: www.sonostar.net

E-mail: sales@sonostar.net

