

# T Model Biplane Wireless Ultrasound Scanner

Welcome to inspect our probe with your phone/ipad

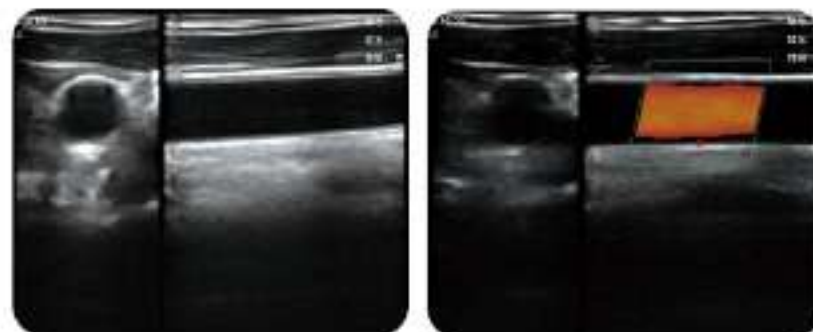
IGG  
ایده گستر قدرت



wifi wireless



L5TC



## Specifications:

- Scanning mode: Electronic array
- Display mode: B, B/M, B+Color, B+PDI, B+PW
- Channel of RF circuit board: 16/32/64
- Probe frequency: 7.5MHz/10MHz
- Scan depth: 20/40/60/100mm
- Image Adjust: BGain, TGC, DYN, Focus, Depth, Harmonic, Denoise, Color Gain, Steer, PRF
- Cineplay: auto and manual, frames can set as 100/200/500/1000
- Puncture assist function: the function of in-plane puncture guide line, out-of-plane puncture guide line, automatic blood vessel measurement.
- Measure: Length, Area, Angle, heart rate, Obstetrics
- Image save: jpg, avi and DICOM format
- Image frame rate: 18 frames / second
- Battery working time: 3~5 hours (according to different probe and whether keep scan)
- Battery charge: by USB charge or wireless charge, take 2 hours
- Dimension: 156×60×20mm
- Weight: 220g
- Wifi type: 802.11g/20MHz/5G/450Mbps
- Working system: Apple iOS and Android, Windows

## A new generation of magic medical devices

This model with two transducers Vertical to each other, and scan same time, display two images on screen same time, so can same time observe crosscutting and longitudinal cutting images of blood vessel and lesion

## Product Configuration

Standard Configuration:

Wireless Ultrasound Scanner x 1 unit, USB Charging Cable x 1pc

Optional:

Carrying Bag or Aluminium Suitcase, Stainless Steel Puncture Guide, Android or iOS Phone/Tablet, Windows PC, Wireless Power Bank, Tablet Bracket, Trolley



Sonostar Technologies Co., Limited



Address: C Building, #27 Yayingshi Road, Science Town, Guangzhou, China www.sonostar.net  
Tel: +86-20-32382095 Fax: +86-20-62614030 Skype: sonostar-ut Mail: sales@sonostar.net

WWW.IGG-MED.COM

شرکت ایده گستر قدرت نماینده تخصصی فروش و خدمات پس از فروش سونو استار در ایران