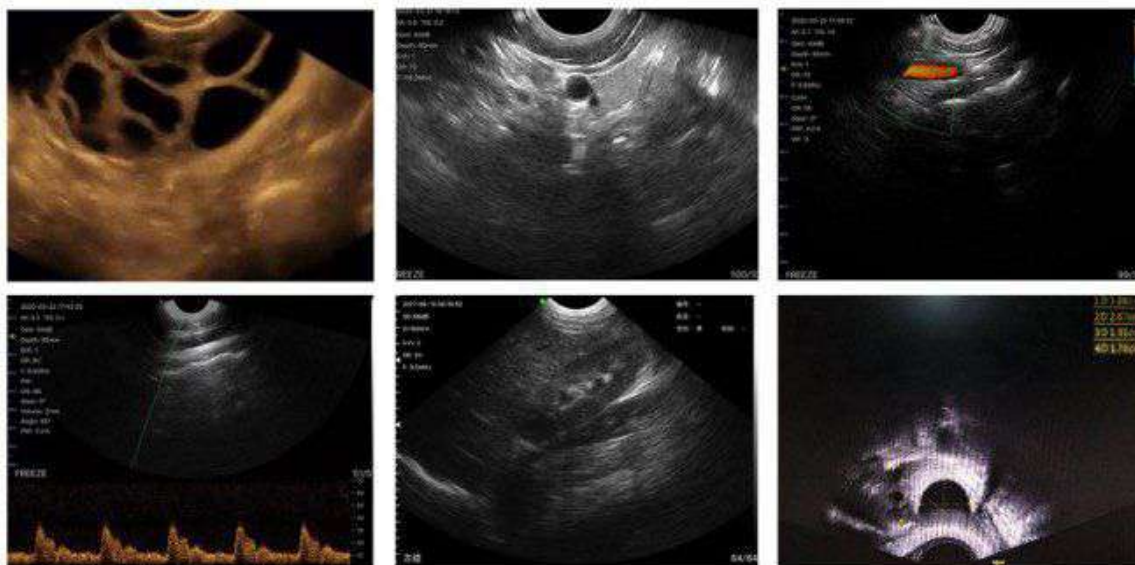


# Wireless Probe Type Ultrasound Scanner

Welcome to inspect our probe with your phone/ipad



- Scan mode: Electronic Array
- Elements: 128
- Channels: 32
- Built-in Battery: 4200mAh
- Battery working time: 3 hours
- Noise reduction: 0-1-2-3-4
- Gain: 30db-105db
- Display mode: B, B/M, Color, PDI, PW

- Frequency: 6.6/8MHz
- Depth: 20-100mm
- Charging method: Wireless charging /USB charging
- Dynamic Range: 40/50/60/70/80/90/100/110
- Measure: Length, Area, Angle, Obstetrics
- Wifi type: 802.11g/20MHz/5G/450Mbps
- Dimension: 340×65×20 (mm)
- Weight: 300g

- Image/Video Storage: jpg, png mp4 and DCM
- Working system: Apple iOS and Android, Windows
- Cineplay: auto and manual, frames can set as 100/200/500/1000
- Image Adjust: Gain, DYN, Focus, Depth, Harmonic, Denoise
- Puncture assist function: the function of in-plane puncture guide line, out-of-plane puncture guide line, automatic blood vessel measurement
- Clinical Application: Abdomen, Gynecology, Obstetric, Cardiac, Urology, Kidney, Lung

Scan to get detail introduction



**Guangzhou Sonostar Technologies Co., Limited**

Address: Building 7, No. 6 Hengchuang Avenue, Zhongxin Town, Zengcheng District, Guangzhou, PRC  
Tel: +86-20-32382095    www.sonostarmed.com    Skype: sonostar-ut    Mail: sales@sonostar.net

