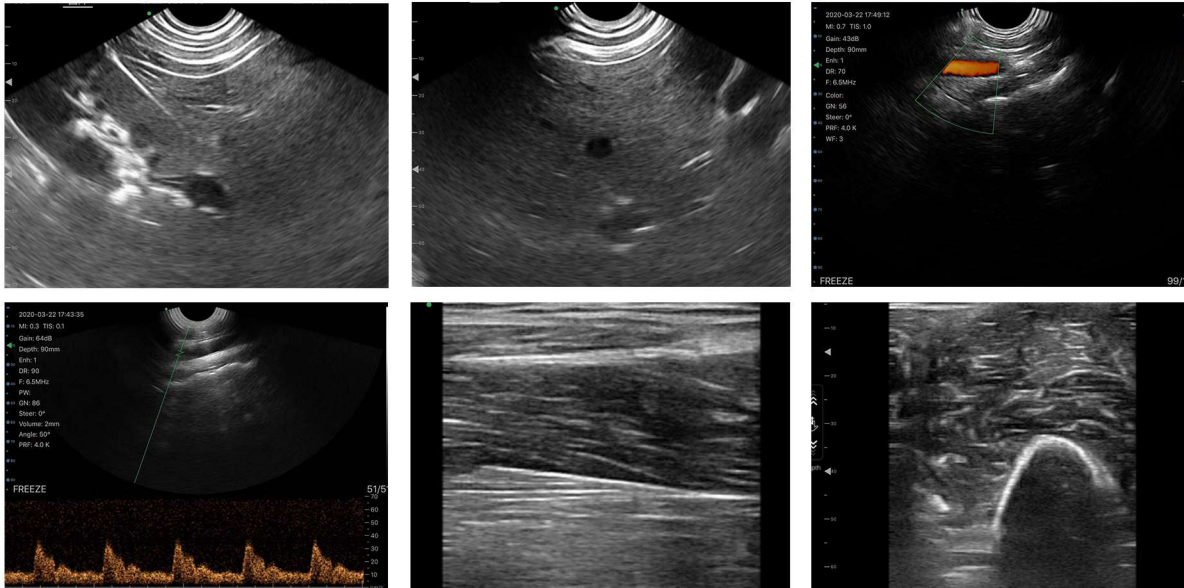


CProbe-4TR Rectal duplex plane probe color Doppler ultrasound

Welcome to inspect our probe with your phone/ipad



4RC



Scan to get detail Introduction

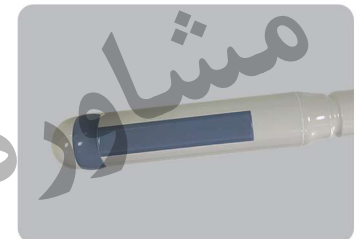
Standard Configuration:

- Wireless probe device 1 Unit,
- Built-in Battery and charge cable 1 Set

Specifications:

- Scanning mode: Electronic array
- Image mode: B, B/M, color, PW, PDI
- Frequency: 6.5/8MHz
- Scan Depth: 40-100mm
- Image Adjust: Gain, DYN, Focus, Depth, Harmonic, Denoise
- Cineplay: auto and manual, frames can set as 100/200/500/1000
- Measure: Length, Area, Angle, Obstetrics
- Image frame rate: 18 frames/cond
- Image save format: jpg, avi and DICOM
- Battery working time: 1 hour, Use the data line for sustainable battery life
- Noise reduction: 0-1-2-3-4

- Dynamic Range: 40/50/60/70/80/90/100/110
- Puncture assist function: in-plane puncture guide line function, out-of-plane puncture guide function
- Charge: by USB, or optional wireless charger
- Length: 360mm -Gain: 30db-105db
- Size/Weight: 336mmx35mmx28mm, 200g
- Wifi type: 802.11g/20MHz/5G/450Mbps
- Working system: Android/iOS



Sonostar Technologies Co., Limited

Address: C Building, #27 Yayingshi Road, Science Town, Guangzhou, China www.sonostarmed.com
Tel:+86-20-32382095 Fax:+86-20-62614030 Skype:sonostar-ut Mail:sales@sonostar.net

